

Casework



MIDMARK MODULAR CASEWORK SYSTEM



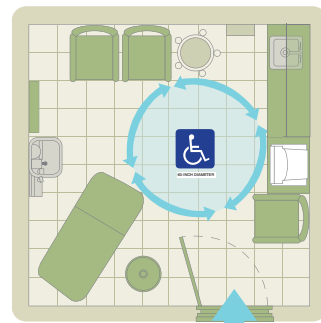
The efficient exam room

Midmark uses its wealth of experience, product design knowledge and physician research to design the most efficient primary care exam room for your practice. This efficient exam room design is intended to be fluid to meet the continually changing needs of physicians and the emergence of electronic medical records.

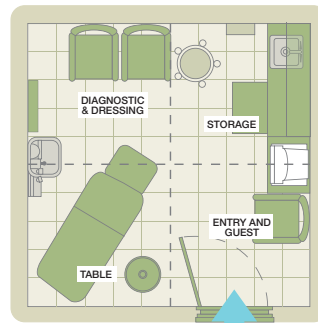
Just by making a few simple updates to your exam room, you can dramatically improve care for your patients and overall efficiency. And, these ideas can be easily implemented with almost immediate results.

Some examples of the efficiency improvements include replacing box-style examination tables with Barrier-Free® examination tables; detailed room layout recommendations for equipment in the exam environment; and how to effectively incorporate EMRs and related technologies while protecting the overall integrity of the room.

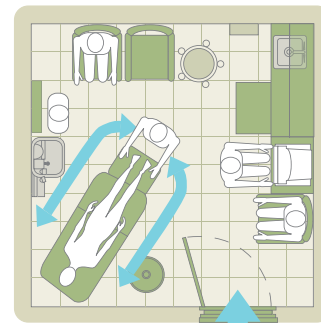
For more detailed information regarding The Efficient Exam Room, please contact the Midmark Medical Customer Service Department at 1.800.MIDMARK, ext. 8921 or visit midmark.com.



The Americans with Disabilities Act recommends a 60° wheelchair turning space



The four zones of the standard primary care exam room



Optimal exam room size (10' x 10') and physician's flow

Simple considerations in design can create advances in patient care and office efficiency.

Casework designed specifically for medical environments

With Midmark Modular Casework, you are the designer. Your choice of configurations allows you to change and rearrange your casework system to fit your needs, so you don't have to change your activity to fit your casework.

Common wood casework breaks down under medical use because it wasn't designed for that purpose. However, Midmark Casework is specifically designed for medical environments and offers many benefits to health care professionals. For example, Midmark has an unmatched **five-year warranty** and a national sales and service support network with databased product reference. That way, you are always assured of the best service and support available for your casework system.



Casework Comparison	Midmark	Wood	Laminate
Medical Design - designed to address the durability and infection control requirements of medical facilities	✓	N/A	✓
Modular Design - easy to reconfigure system allows you to add, rearrange or even move your casework with you	✓	N/A	N/A
Internal Adjustability - self cleaning, ball bearing glides are fully adjustable for future storage changes	✓	N/A	N/A
Seamless Drawers - one-piece construction allows drawers to contain spills and are easy to clean	✓	N/A	N/A
Seamless Door Surfaces - resist spilled fluids and chemicals and can be cleaned with no surface degradation	✓	N/A	N/A
Low Initial Price - lower initial out-of-pocket price, excluding depreciation	N/A	✓	✓
Matches Exam & Procedure Equipment - casework design and colors coordinate with exam tables, stools, etc.	✓	N/A	N/A



Seamless Panels
 Seamless, polymer-covered panels provide a durable surface that resists spilled fluids and chemicals and can be cleaned with no surface degradation.



Seamless Polystyrene Drawers
 Rounded corners and one-piece construction allow drawers to contain spills and are easy to clean.



Adjustable Ball Bearing Glides
 Self-cleaning ball bearing glides allow the drawers to slide in and out smoothly every time. The steel structure also serves as a flexible shell design to allow for changing configurations.


Midmark's durable, modular casework evolves with your practice.

Full medical casework line that is efficient and flexible

Over many years of designing healthcare equipment, Midmark has learned that features like functionality, flexibility and variety are vital when selecting casework for your practice. We've also learned that the aesthetic appeal of casework has an impact on the image of your practice to patients and staff. Midmark's full line of casework in three-inch increments is designed to meet all architectural standards. Their modularity enables you to remodel, move on demand and be flexible. And, no tools are required when changing drawer configurations.

Whatever your storage needs, Midmark Modular Casework not only improves office efficiency, but also enhances the reputation of your practice for years to come by delivering:

- Flexible storage design that can easily be reconfigured as office needs evolve
- Modularity and design support to create a system that fits any office concept with...
 - internal storage flexibility after installation
 - a full product line to choose from
 - the ability to be depreciated at an accelerated rate and can be taken with you
- Durability to stand up to the demands of a healthcare facility
- A clean, appealing look that you and your staff will be proud to show patients



Engineered to Deliver Efficiency and Value
Midmark offers separate cabinet and sink units or an economical sink and cabinet combo unit that can save cost for your practice.

Midmark Casework is designed to grow and move with you.

Pre-configured combinations maximize space and budget

Midmark's Modular Casework offers many options to deliver the best value possible for your exam room. But to best fit your budget and timing issues, Midmark has four pre-configured casework combinations that mirror typical room applications based on the most frequently requested combinations.

These cost-effective solutions for your exam room with four great options makes ordering the right system for your needs easier, while allowing you to optimize space... and your budget.



Traditional Examination Room Casework

Designed to meet your changing needs, Midmark's Traditional Exam Room Casework provides drawer and bulk storage. A drop-down writing desk with leg and countertop serves as a fixed writing surface for completing paperwork.



Managed Care Examination Room Casework

Midmark's Managed Care Examination Room Casework is just one of the great options for optimizing your space – and your budget – in the exam room. This grouping has added drawer storage for organizing and managing supplies. It also features a writing surface that pulls out when it's needed... and tucks away when it isn't.



Best Value Examination Room Casework

The Best Value Casework grouping is an efficient option for exam rooms with limited space. It features a larger storage area for bulk supplies and personal items, two drawers for organization and a pullout writing surface for making quick notes on patient charts.



Basic Examination Room Casework

Midmark Basic Exam Room Casework is ideal for the most basic storage needs. It features a single drawer for organizing smaller supplies and a larger storage area for bulk supplies and personal items. In addition to being efficient and economical, Midmark Basic Exam Room Casework is durable, easy to clean and easy to install.

Delivering the best value in casework for your exam room.

Designed for a variety of healthcare settings

Midmark's Modular Casework can accommodate your practice with a system that is versatile enough to meet your needs in a laboratory setting, as well as a hospital patient room or nurses' station. And, our casework complements our established line of exam tables, physician seating, sterilizers, procedures tables and lights, allowing you to customize and coordinate your entire exam room, lab or facility.



Clinical Lab

Midmark Casework can satisfy the storage and workspace needs of clinical lab environments.



Hospital Patient Room

Offering a full line of ADA casework, Midmark supplies casework for patient rooms and other disabled access areas.



Nurses' Station

Combining aesthetics and functionality, Midmark's casework creates an effective work environment for staff to organize information and respond quickly to the day's needs.

Casework that is versatile enough for any environment.

Midmark's mobile cart and treatment cabinets

Midmark's versatile, light duty cart and treatment cabinet systems enable you to bring instruments, supplies, and even a writing surface to patients in one easy step... saving you time. And, an optional bumper-edged top prevents damage to walls. The carts are designed for in-room use because they bring supplies to the point of care.

And, as always... you will find all of the same safe, efficient features in our mobile cart and treatment cabinets that are inherent to the entire line of Midmark medical products.



Dual wheel casters provide easy maneuverability, providing the flexibility to position this workstation where needed.



Midmark's specially designed Kydex® top eliminates areas where bacteria and viruses can get a foothold, making cleaning of spills, dirt and germs easier.

Access supplies at the point of care.

Complete your facility with Midmark products

Midmark offers a full line of products to meet all your needs from exam tables, sterilization and casework to lighting, seating and refrigeration. With an extensive selection of high-quality products, our trusted equipment can help you deliver the most efficient patient care.



Ritter 261 Waste Receiver with Bag Retaining Ring
With the Ritter 261, hands-free waste disposal is safe and effortless. Its sturdy, seamless construction allows for easy cleaning and helps prevent leakage of waste materials.



Midmark 662 Towel, Glove & Cup Dispenser
The Midmark 662 is the convenient solution to your sanitary needs.

Midmark is more than just a manufacturer of healthcare products. We are a provider of innovative solutions that work for you.



Midmark 427 Air Lift Physician Stool
The foot-operated Midmark 427 stool adjusts to fit the physician's specifications. Its contoured seat is ergonomically designed for comfort while optional armrests and backrests are also available for added support.



Ritter 152 Halogen Exam Light
The Ritter 152 light provides superior, white, shadow-free illumination while remaining cool to the touch. It offers the option of maneuverability, making examining your patients easier than ever.



Midmark 663 Instrument Panel
The Midmark 663 Instrument Panel houses physicians' most commonly used diagnostic equipment in one convenient location.



Midmark 664 Dressing Nook
When opened, the Midmark 664 Dressing Nook is a mirrored dressing area with storage for personal items and clothing; closed, it appears as a color-coordinated wall panel with insert colors available in standard Midmark colors.

Specifications Midmark Modular Casework

Features:

Quality ball bearing glides

Powder coated paint finish

Base paint color is

Pebble Grey

One-piece molded polystyrene drawers

18 and 20 gauge cold rolled steel shell

For more detailed specifications, refer to the Midmark Casework Catalog.

5-year warranty

Options

Door locks

Central drawer locks

Drawer divider set

Task lights (casework only)

Sloping tops (casework only)

Mobile cabinet handles (carts only)

Hard surface, carpet or locking carpet casters (carts only)

Soft edge top (carts only)

Installation

General cabinet installation is required and can be organized through your local Midmark dealer for a fee.*

Standard Panel Color

The standard Midmark Modular Casework features snap-on color drawer and door pulls on a polymer covered pebble grey panel.

Insert Colors

For a full listing of door/drawer insert color options for the standard panels, please refer to the *Casework Color Selection Guide*.

Woodgrain Panel Colors

The Midmark Modular Casework is available in woodgrain. Six selections of woodgrain include Tidewood, San Pedro, Natural Maple, Natural Oak, Hayward Cherry, Mahogany, and neutral Pebble Grey. For samples, please refer to the *Casework Color Selection Guide*.

Countertop Colors

The Midmark Modular Casework Standard Countertops are listed in the *Casework Color Selection Guide*.

*If sinks and faucets are required, the plumbing hookup will need to be conducted through a contractor or plumber, which is not included in the general installation.



Midmark is an ISO 13485 and ISO 9001 Certified Company.
For more information or a demonstration, contact your Midmark dealer or Call: 1-800-MIDMARK Fax: 1-800-365-2499
Outside the U.S.A. Call: 1-937-526-3662 Fax: 1-937-526-8247
or visit our website at midmark.com

© 2005 Midmark Corporation
60 Vista Drive P.O. Box 286 Versailles, Ohio 45380-0286
Products subject to improvement changes without notice
Litho in U.S.A. 007-0563-00 Rev. C1 (6/08)



Because we care.